

Lifeline

AN INTERGROUP PUBLICATION

2712 SOUTH GRAND AVENUE,
SANTA ANA, CALIFORNIA, 92705
TELEPHONE (714) 556-4555

"I have only just a minute
Only sixty seconds in it
Forced upon me, can't refuse it,
Didn't seek it, didn't choose it.
I must suffer if I lose it,
Give account if I abuse it.
Just a tiny little minute,
But Eternity is in it."

(USPS 312-680) VOL. XVII. NO. 8.

ORANGE COUNTY, CALIFORNIA

JANUARY 1980

ONE DAY AT A TIME

YESTERDAY.....TODAY...and....TOMORROW

There are two days in every week about which we should not worry, two days which should be kept free from fear and apprehension.

One of these days is YESTERDAY with its mistakes and cares, its faults and blunders, its aches and pains. YESTERDAY has passed forever beyond our control.

All the money in the world cannot bring back YESTERDAY. We cannot undo a single act we performed; we cannot erase a single word we said. YESTERDAY is gone.

The other day we should not worry about is TOMORROW with its possible adversities, its burdens, its large promise and poor performance. TOMORROW is also beyond our immediate control.

TOMORROW'S sun will rise, either in splendor or behind a mass of clouds-but it will rise. Until it does, we have no stake in TOMORROW for it is yet unborn.

This leaves only one day- TODAY-. Any man can fight the battles of just one day, it is only when you and I add the burdens of those two awful eternities - YESTERDAY and TOMORROW -that we break down.

It is not the experience of TODAY that drives men mad- it is the remorse or bitterness for something which happened YESTERDAY and the dread of what TOMORROW MAY BRING.

LET US THEREFORE, LIVE BUT
ONE DAY AT A TIME!

"I said to the man at the gate of the New Year, 'Give me a light that I may find my way through the unknown.' And he replied, 'Go out into the darkness of the New Year and place your hand firmly into the hand of God. That shall be better for you than any light or any known way.'"

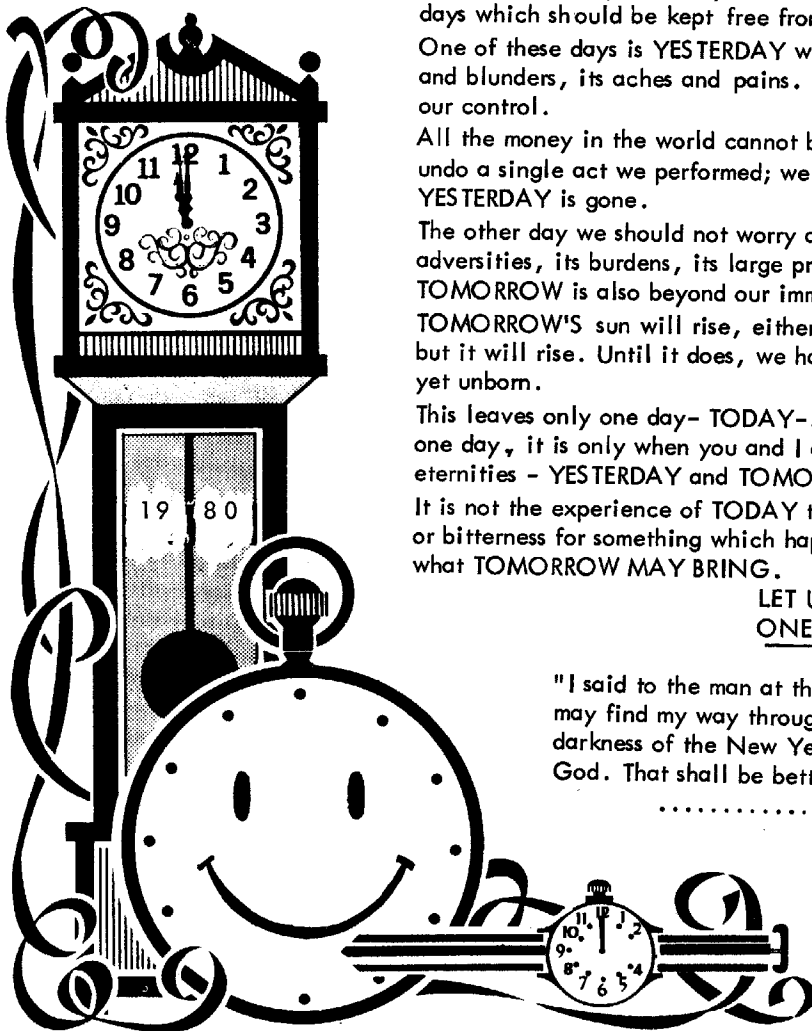
.....Minnie Louise Haskins

Make This New Year Resolution—NOW

**KEEP YOUR SENSE OF HUMOR!
DON'T TAKE YOURSELF SO
DARNED SERIOUSLY!**

WEAR A HAPPY FACE!

HAPPY NEW YEAR



IMPRISONMENT - Without Walls or Guards

In that time of long ago and far away, some forgotten tyrant cast a young man into the local dungeon for a minor violation of the law.

The unfortunate young man spent many years surrounded by the four walls of his cell. His only contact with the world outside was a mute guard. Each day the guard shoved a plate of food through the cell door's iron grill and disappeared.

So the prisoner lived, existed in a waste of many years.

One day, more furious than ever at the injustice of his sentence, he decided to escape.

Slowly, he crept beside the cell door and peaked out. The corridor was empty - not a guard in sight. He leaned against the door to see farther down the corridor. Without warning, the door squeaked open!

He looked in every direction. Still no sign of the guard. He walked, ran, stumbled toward the big iron gate that led to liberty. It too was open. He was free!

But how many years he had lost just because he thought the door to his dungeon was locked? How many years can be lost because one thinks a door is locked? How many dungeons does one create with imaginary walls as solid as stone? A lifetime can be lost by a number of dungeons without walls. But what are the stones and mortar that construct the fictitious dungeons of imprisonment?

There are many forms of imprisonment:

- 1) Reliance on drinks and drugs to dull or to stimulate the senses.
- 2) Lack of education which reduces appreciation for art and music, literature and understanding, and decreases economic opportunity.
- 3) Worn out tradition that force such beliefs as "It was good enough for my father so it's good enough for me."
- 4) Political ignorance which opens the way for demagogues and dictators.
- 5) Prejudices and half truths that lead to the prisons of distrust, fear and hate.
- 6) Belief in superstitions, good luck charms, and astrological forecasts that either oppose action in any given situation.
- 7) Desire for great wealth that reduces one to slavery and denies even the simple pleasures of life.
- 8) Fear of the new that actually made great thinkers of the past proclaim, "If a man was meant to fly, he would have been born with wings."
- 9) Doubt of a power higher than mankind and the terror of the grave.

These and similar dungeons are created in the mind to imprison the human spirit.

"Stone walls may not a prison make, nor iron bars a cage". but human beings themselves produce their own variety of dungeons. If they could find the door that would set them free. For there is a door and it can be opened. Submitted by Nancy D., Costa Mesa.

IN SEARCH OF HAPPINESS. . .

All the dreams, from 18 to here seem like trails leading back to the same peaceful pond of sharing. What am I searching for? Am I searching? if it's happiness that we all work to obtain then we must know intuitively what "happiness" is. Or is it happiness the road along the way as we go through life in the direction of a vague goal? I've come to the conclusion that each day, one at a time is full of happiness if we just slow down and look. The sun rises with a unique beauty each morning. That sunrise will never again happen just that way. I become sad to think that in haste I've neglected to stop and watch the magic of daybreak. Today will never be again. Yesterday is gone and can't be altered. Tomorrow is only a dream that will become reality regardless of how I anticipate it. Today, now, in this moment I will find some happiness. I will treasure

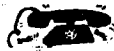
the feelings that flow through me at this moment no matter what they may be. In my haste of chasing dreams I had forgotten to live now. In my greed for life, I gave away peace and the appreciation of being alive and healthy.

One of the greatest pleasures I have found is in giving. My time is so precious that when I choose to share it with someone it's one of the greatest gifts I am able to give. I have found I am a very solitary person able to reach out to others, but seldom letting anyone reach out to me. There must be so much peace in accepting the love of another human being. I live inside a very delicate shell, as birds are hatched I must learn to slowly peck my way out without someone trying to unwrap my shell for me. I'm fearful of the obligation I will allow myself to feel if I let someone love me. I go along unloved and happy because I feel no pressure to return feelings. It must

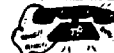
stem from that long marriage of fulfilling someone else's needs and neglecting my own. If someone comes close I start to fear engulfment, weakness, and loss of myself again. And yet I know deep inside that there is peace and happiness in sharing love. There has to be a way that allows freedom and growth and still closeness. There has to be a way to love someone so much that you can let them go free. There is a way of loving yourself so much that you choose to share and be fed and grow.

My search for happiness must be entwined somewhere in my search for freedom. Only I can give myself freedom or take it away. Only I can allow myself to learn to love. There is no magic in this world other than the beauty that each day is mine to choose freedom and happiness for myself, or fall short of my own responsibility to myself and let someone else or something else control my life! Susan C.

LIFELINE - JANUARY 1980 - VOL. XVII, NO. 9. (USPS 312-680) SUBSCRIPTION PRICE \$4.00 PER YEAR. PUBLISHED MONTHLY BY THE ORANGE COUNTY INTERGROUP ASSOCIATION OF ALCOHOLICS ANONYMOUS AT 2712 S. GRAND AVE., SANTA ANA, CA. 92705.



ORANGE COUNTY A.A. CENTRAL OFFICE



ORANGE COUNTY INTERGROUP ASSOCIATION OF ALCOHOLICS ANONYMOUS STATEMENT OF INCOME AND EXPENSES - NOVEMBER 25, 79

INCOME:	NOVEMBER	YEAR TO DATE
GROUP CONTRIBUTIONS	\$ 3,173.10	41,165.67
INDIVIDUAL CONTRIBUTIONS	153.50	161.52
LITERATURE SALES	3,245.70	54,150.22
TRANSMITTAL TO NYGSO	-0-	412.00
LIFELINE SUBSCRIPTIONS	376.00	4,491.50
SPECIAL EVENTS	238.11	751.75
INTEREST INCOME	145.24	511.81
MISCELLANEOUS INCOME	35.55	507.54
TOTAL INCOME	\$ 7,367.20	104,152.01
DISBURSEMENTS:		
ACCOUNTING & LEGAL	75.00	695.00
BANK CHARGES	.50	22.16
GROUP INFORMATION	84.75	862.34
INSURANCE	94.58	1,040.17
MAINTENANCE, REPAIRS & SERVICE	31.97	509.46
OFFICE SUPPLIES & SERVICES	78.01	1,625.41
POSTAGE	137.17	557.19
PRINTING	34.23	711.31
PUBLIC INFORMATION	18.30	585.29
RENT	396.00	4,356.00
SALARIES & WAGES	2,004.98	21,124.94
PAYROLL TAXES	102.62	1,662.58
PROPERTY TAXES (REFUNDABLE)	-0-	96.85
TAXES & LICENSES	5.00	20.26
TELEPHONE, OFFICE	280.34	3,132.55
TELEPHONE, T.A.B.	187.90	1,574.24
UTILITIES	161.24	963.91
TRANSMITTAL TO NYGSO	-0-	412.00
LIFELINE EXPENSE	519.34	5,723.36
COST OF LITERATURE	2,693.62	43,293.85
SPECIAL EVENTS EXPENSE	46.19	874.65
TOTAL DISBURSEMENTS	\$ 6,951.74	89,843.52
NET GAIN OR (LOSS)	415.46	14,308.49

	ASSETS	LIABILITIES & FUND BALANCE
CASH ON HAND	50.00	
CASH IN CHECKING ACCOUNT	10,485.25	
CASH IN SAVINGS ACCOUNT	17,843.46	
PRUDENT RESERVE ACCOUNT	5,077.85	
ACCOUNTS RECEIVABLE	819.84	
INVENTORY	9,056.25	
PREPAID RENT	307.20	
PREPAID INSURANCE	89.19	
OFFICE FURNITURE & EQUIPMENT	4,550.00	
LEASEHOLD IMPROVEMENTS	598.32	
PAYROLL TAXES PAYABLE		497.69
FUND BALANCE		48,379.67
	48,877.36	48,877.36

CONTRIBUTIONS RECEIVED AFTER THE 25TH OF MONTH WILL BE SHOWN ON NEXT MONTH'S REPORT. PLEASE MAKE CHECKS OUT TO CENTRAL OFFICE & BE SURE TO SHOW NAME OF GROUP MAKING CONTRIBUTION.

Excerpt from Tradition #7 (Long Form)
"Then too, we view with much concern those AA Groups which continue beyond prudent reserves to accumulate funds."

Lifeline

We need contributions, cartoons, articles of your own experiences. For example, "What AA means to me," problems of getting rid of empties, hiding the jug, etc.

Also if you have any suggestions about Lifeline, send them in. We are trying to give you the best in Orange County news.

Please help us to keep the subscriptions up, by mentioning it in your group. We do need your help.

Lifeline presents the experiences of AAs and others interested in alcoholism. Opinions expressed herein are not to be attributed to Alcoholics Anonymous as a whole, nor does publication of any article imply endorsement, either by AA or the Lifeline.

NOTE: It is very difficult to write a proper memorial to members your editor does not know personally. Please, when you call in a death of a member, include a short writeup about the person. Some of you have done this and I am most grateful....Editor

DEADLINE FOR FEBRUARY ISSUE WILL BE JANUARY 8TH!!!!!!!!!!!!!!!!!!!!!!
Russ P., Lifeline Coordinator, wishes to thank the following for their help in getting out the December Lifeline:
Hank & Nellie H. -Huntington Beach
Edwin & Helene S. -Costa Mesa
Emma P. - El Toro
Fran C. -Huntington Beach
Margie J. - Costa Mesa.

Lifeline

Subscription Blank

PLEASE ENTER MY SUBSCRIPTION TO LIFELINE FOR A PERIOD OF _____ YEARS AT \$4.00 PER YEAR. REMITTANCE ENCLOSED _____

NAME _____

STREET _____ CITY _____

STATE _____ ZIP CODE _____ TELEPHONE _____

MAIL TO LIFELINE, 2712 S. GRAND AVE., SANTA ANA, CA. 92705

MERRY CHRISTMAS AND A HAPPY NEW YEAR FROM YOUR CENTRAL OFFICE.....
COLLEN C., ED B., DEAN H., AND ALL THE VOLUNTEERS.

GROUP NEWS & Speakers

ANAHEIM TUESDAY SPEAKERS

Alana Club, 202 W. Broadway.

Speakers:

- Jan. 1- Roy C. (Mission Viejo)
- Jan. 8- Jack M. (Tustin)
- Jan. 15- George M. (La Habra)
- Jan. 22- Betty P. (Laguna Beach)
- Jan. 29- Ethylen R. (Mission Viejo)
- Marcus B.

ANAHEIM WEDNESDAY SPKRS.

Alana Club, 202 W. Broadway.

Speakers:

- Jan. 2- Ginny C. (Pasadena)
- Jan. 9- Bob C. (Cypress)
- Jan. 16- Clarence B. (Tustin)
- Jan. 23- Irish Annie (Huntington Beach)
- Jan. 30- Mac B. (Covina)
- Bill O.

ANAHEIM THURSDAY SPKRS.

Alana Club, 202 W. Broadway.

Speakers:

- Jan. 3- Hanna (Costa Mesa)
- Jan. 10- Jim W. (Garden Grove)
- Jan. 17- Phil P. (Newport Beach)
- Jan. 24- Bob L. (Glendale)
- Jan. 31- Cliff W. (Anaheim)
- Jim P.

ANAHEIM FRIDAY SPEAKERS

Hospital, 1830 W. Romneya.

Speakers:

- Jan. 4- Jim W. (Garden Grove)
- Jan. 11- Lucky (Anaheim)
- Jan. 18- Hanna H. (Costa Mesa)
- Jan. 25- Red. A. (Buena Park)
- Mary J.

ANAHEIM SATURDAY SPEAKERS

Alana Club, 202 W. Broadway.

Speakers:

- Jan. 5- Maurice Z. (Hollywood)
- Jan. 12- Burbank Gang
- Jan. 19- Richard B. (Newport Beach)
- Jan. 26- Jim W. (Garden Grove)
- Mario P.

COSTA MESA FRIDAY SPEAKERS

Alana Club, 2040 Placentia.

Speakers:

- Jan. 4- Sue M. (Orange)
- Jan. 11- Terry M. (Costa Mesa)
- Jan. 18- Tom W. (Dana Point)
- Jan. 25- John H. (L.A.)
- Cindy G.

COSTA MESA SUNDAY SPEAKERS

Oddfellow's Hall, 2476 Newport, 7:30PM.

Speakers:

- Jan. 6- Angie S. (Orange)
- Jan. 13- Mary Ann K. (Santa Ana)
- Jan. 20- Lad S. (Palm Springs)
- Jan. 27- Kent A. (Palm Springs)
- Bill V.

CYPRESS FRIDAY SPEAKERS

5900 Ball Rd.

Speakers:

- Jan. 4- Pat M. (Westminster)
- Jan. 11- Donna
- Jan. 18- Micky & Jim H. (Huntington B.)
- Jan. 25- Bob C. (Cypress)
- Ellen A.

FOUNTAIN VALLEY SUN. SPKRS.

Comm. Center, 10200 Slater, 8 PM.

Speakers:

- Jan. 6- Pat B. (Fountain Valley)
- Jan. 13- H.B. Civic Center
- Jan. 20- Chuck C. (Laguna Beach)
- Jan. 27- Johanna (Garden Grove)
- Gordon B.

FULLERTON MONDAY SPEAKERS

Hospital, 101 E. Valencia Mesa Dr.

Speakers:

- Jan. 7- Clancy I. (Venice)
- Jan. 14- Sister Joan (Studio City)
- Jan. 21- Claire S. (L.A.)
- Jan. 28- Claude C. (Placentia)
- Cecil N.

FULLERTON WEDNESDAY SPKRS.

Alana Center, 705 N. Harbor.

Speakers:

- Jan. 2- Oscar F. (Fullerton)
- Jan. 9- Joe Q. (Laguna Beach)
- Jan. 16- Shirley K. (Arcadia)
- Jan. 23- Dobe C. (Sherman Oaks)
- Jan. 30- Bob L. (Glendale)
- Tom F.

FULLERTON SATURDAY SPEAKERS

Oddfellow's Hall, Lemon & Amerige.

Speakers:

- Jan. 5- Alabam C. (N. Hollywood)
- Jan. 12- Bob & Mike B. (Carlsbad)
- Jan. 19- Ray G. (Glendora)
- Jan. 26- Dobe C. (Sherman Oaks)
- Jim R.

FULLERTON SUNDAY SPEAKERS

705 N. Harbor, 10:30 AM, Club.

Speakers:

- Jan. 6- Ray H. (San Bernardino)
- Jan. 13- Ken L. (Santa Ana)
- Jan. 20- Linda B. (Fountain Valley)
- Jan. 27- Donna L. (Garden Grove)
- John J.

GARDEN GROVE MON. WOMEN

9596 Garden Grove Rm. #210, 8 P.M.

The speaker for Monday, January 7th will be Mary R. from Whittier.

- Ellen Van T.

GARDEN GROVE SATURDAY SPKRS.

Alana Club, 9636 Garden Grove Blvd.

Speakers:

- Jan. 5- Shirley C. (Buena Park)
- Jan. 12- John K. (Chino)
- Jan. 19- Les A. (Baldwin Park)
- Jan. 26- Louise H. (Bellflower)
- Mike M.

GARDEN GROVE SUNDAY SPEAKERS

Alana Club, 9636 Garden Grove, 12 noon

Speakers:

- Jan. 6- Nita B. (Garden Grove)
- Jan. 13- Ed F. (Garden Grove)
- Jan. 20- Tom K. (Garden Grove)
- Jan. 27- Len B. (Garden Grove)
- Wayne B.

HUNTINGTON BEACH FRIDAY

Civic Center, 2000 Main St.

The speaker for Friday, January 25th will be Sybil C. from Pasadena.

- Clint P.

IRVINE SATURDAY SPEAKERS

Church, Cor. University & Culver.

Speakers:

- Jan. 5- Frank A. (Orange)
- Jan. 12- Lyn W. (S. Laguna)
- Jan. 19- Betty P. (Long Beach)
- Jan. 26- Tom W. (Dana Point)
- Mike S.

LAGUNA BEACH WEDNESDAY SPKR.

Canyon Club, 1945 Broadway.

Speakers:

- Jan. 2- Polly L. (Zanesville, O.)
- Jan. 9- Jerry C. (Laguna Hills)
- Jan. 16- Jack P. (N. Hollywood)
- Jan. 23- Mary R. (Tustin)
- Jan. 30- Clint H. (San Clemente)
- George McC.

LAGUNA BEACH SAT. VISIT SPKRS.

Canyon Club, 1945 Broadway, 8 PM.

Speakers:

- Jan. 5- Bob Mc (Costa Mesa)
- Jan. 12- Serenity Sam (Chino)
- Jan. 19- Bernie O. (San Marcos)
- Jan. 26- John's Group (Chino)
- Jean B.

LAGUNA NIGUEL SUN. SPEAKERS

Crown Valley Comm. Park, 8 P.M.

Speakers:

- Jan. 6- Marion W. (Upland)
- Jan. 13- Lyn W. (Laguna Beach)
- Jan. 20- Pam W. (Laguna Beach)
- Jan. 27- Frank O'R. (Tustin)
- M.A.B.



BUENA PARK SUNDAY SPEAKERS
8150 Knott Ave., Comm. Center.

Speakers:
Jan. 1- Surprise
Jan. 8- Hal M. (Garden Grove)
Jan. 15- Lola K. (Bellflower)
Jan. 22- Laverne & Ralph (Palm Springs)
Jan. 29- Norm A. (Commerce)

.....Chuck C.
LA HABRA FRIDAY SPEAKERS
631 N. Euclid.

Speakers:
Jan. 4- Lucetta D. (San Gabriel)
Jan. 11- Lyn W. (Laguna Beach)
Jan. 18- Bill H. (Balboa)
Jan. 25- Don N. (Culver City)
.....Owen L.

ORANGE MONDAY SPEAKERS
Friendship Club, 2191 Orange-Olive Rd.

Speakers:
Jan. 7- Ray B. (Orange)
Jan. 14- Al M. (Hollywood)
Jan. 21- Gene S. (Orange)
Jan. 28- Jack P. (N. Hollywood)
.....Sandy B.

ORANGE FRIDAY SPEAKERS
Children's Hosp. Aud., 1109 W. La Veta.

Speakers:
Jan. 4- Johnny H. (Lakewood)
Jan. 11- Dobie C. (Sherman Oaks)
Jan. 18- Carolyn O'R. (Tustin)
Jan. 25- Sue R. (Orange)
.....Glenn T.

ORANGE SUNDAY SPEAKERS
Hospital, 401 S. Tustin, 8 PM.

Speakers:
Jan. 6- Toni C. (Laguna Beach)
Jan. 13- Ed McC. (Westminster)
Jan. 20- Ed. L. (Orange)
Jan. 27- Les H. (Orange)
.....Lenora McK.

SANTA ANA SATURDAY SPKRS.
Hospital, 1001 N. Tustin, 8 PM.

Speakers:
Jan. 5- Carol B. (Long Beach)
Jan. 12- Bill P. (Newport Beach)
Jan. 19- C.C.K. (Mission Viejo)
Jan. 26- Mike F. (Escondido)
.....Bob W.

STANTON TUESDAY SPEAKERS
Step House, 10936 Dale Ave., 8PM.

Speakers:
Jan. 1- Surprise
Jan. 8- Eddie C. (Pasadena)
Jan. 15- Norm A. (Commerce)
Jan. 22- Pat C. (Pomona)
Jan. 29- Shirley C. (Brea)
.....Adrian R.

ALL MEETINGS BEGIN AT 8:30PM
UNLESS OTHERWISE NOTED.

SOUTH LAGUNA SAT. SPEAKERS

Hosp., 31872 Coast Hwy., 8PM.
Speakers:
Jan. 5- Bob C. (L.A.)
Jan. 12- Bea J. (L.A.)
Jan. 19- Bill M. (Tarzana)
Jan. 26- Kathleen L. (Santa Monica)

.....George H.
TUSTIN SUNDAY SPEAKERS

Devonshire & Sycamore, 9:02 A.M.
Speakers:
Jan. 6- Special Group
Jan. 13- Jim B. (Covina)
Jan. 20- Louise H. (Bellflower)
Jan. 27- Chief H. (Lancaster)
.....Chuck D.

TUSTIN TUESDAY SPEAKERS
Newport & Dodge, 8 P.M.

Speakers:
Jan. 1- Jack M. (Tustin)
Jan. 8- Ken S. (Laguna Niguel)
Jan. 15- Johanna Z. (Costa Mesa)
Jan. 22- Rick Z. (Costa Mesa)
Jan. 29- Colleen D. (Dana Point)
.....Sheridan.

NEW GROUPS (DO NOT APPEAR IN DIRECTORY)

DANA POINT SUNDAY
Question & Answer, 10AM, Capistrano
By the Sea Hospital Dining Room.

GARDEN GROVE MONDAY
Step Study, 1:30 P.M., 8501 Acacia.

MISSION VIEJO TUESDAY
Men's Stag Wandering Group, 8 P.M.,
call 556-4555 for location.

LAGUNA BEACH THURSDAY
Closed Women Step Study, 7:30 P.M.,
2575 Altamar Dr.
Speaker, St. Mary's Guild Hall, 8:30PM.

FULLERTON FRIDAY
Discussion, 11 P.M., Alano Center, 705
N. Harbor.

SAN CLEMENTE FRIDAY
Big Book Study, 8:15 PM, Alano Club,
324 Calle de Los Molinos.

ANAHEIM MONDAY
Discussion, 7:30 AM, Alana Club, 202
W. Broadway.

SAN CLEMENTE MONDAY
6 P.M. Stag, 324 Calle dl Los Moli-
nos.

IRVINE WEDNESDAY
U.C.I. Student Service, # 231.

HUNTINGTON BEACH WED.
Discussion, 8 PM, 18631 Chapel Lane.

IRVINE THURSDAY
(C) Women Discussion, 9:30AM, 3883
Park View Clubhouse.

NEW GROUPS CONTINUED.

CYPRESS SUNDAY
Women's Step Study, (C), Savings and
Loan Bldg., 5900 Ball Rd., 7 P.M.

FULLERTON MONDAY
Discussion, 7:30AM, 705 N. Harbor.

TUSTIN TUESDAY
Speaker, 8PM, Church, Newport and
Dodge.

NEWPORT BEACH WEDNESDAY
Teenage Discussion, 7:30PM, 1441
Superior.

ORANGE TUESDAY
Wmn. Study, 12 Noon, 777 S. Main, Suite 116

BUENA PARK THURSDAY
Participation, 7691 Orangethorpe Ave.

DANA POINT THURSDAY
Yng. People Disc., 8PM, 33915 Del Obispo
Hospital.

EL TORO THURSDAY
Spkr., 8PM, M.C.A.S. Church Annex.

COSTA MESA SATURDAY
Disc., 12:30AM, 2040 Placentia, Club.

GARDEN GROVE SATURDAY
Participation, 11PM, 9636 Garden Grove.
Discussion, Main & Stanford, Ch. 7:30PM.

TALENT SHOW.

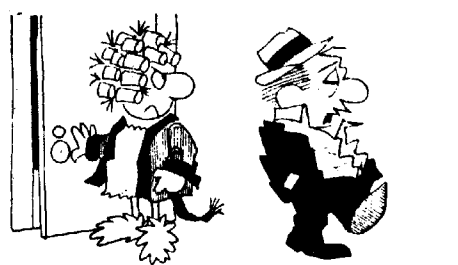
Anyone with talent(?) or aspiring, who
is interested in participating in a Gay
90's talent show...drop a note to:

FRACTURED FOLLIES
%Central Office
2712 S. Grand Ave.
Santa Ana, CA. 92705

(Please do not call.) Include your name,
your talent(if any) and phone number.
Also needed are those experienced in
stage production: choreography, set de-
sign, etc.....

SOBER SKIERS...

Are you interested in joining with a
group of AA Skiers for day skiing
locally and weekend trips to Mamouth?
If you are, contact: Pat P., 505 Allview
Terrace, Laguna Beach, Ca. 92651 or
call: (714) 494-0467.



I was not OUT until all hours of the night... I
was in Arthur's bar.

INTERGROUP COUNTY CALENDAR

INTERGROUP MEETING Jan. 8th AA Easter Meeting April 6th
 Central Office Open House Feb. Pac. Region Assembly Feb. 29, Mar. 1, 2

44 GROUPS REPRESENTED AT DECEMBER INTERGROUP MEETING

<p>Anaheim:- Thurs. Wandering Group-(Club) Thurs. Spkr. Buena Park:- Sun. Spkr. Corona del Mar:- Tues. Disc., Noon Costa Mesa:- Sun. Spkr. Oddfellows-(Club) Wed. Q&A. Cypress:- Fri. Speaker Dana Point:- Tues. Disc. Fountain Valley:- Sun. Spkr. Fullerton:- Thurs. Mens Stag-Sun. Disc.-(Club) Mon. Disc. -Wed. Spkr. -Sun. Spkr. Garden Grove:- Wed. Part. -Thurs. Disc.-(Club) Thurs. Disc. -Sun. Spkr. Huntington Beach:- Mon. Bk. Study-Tues. 1PM Disc. -Tues. Heil St. -Tues. Chapel Ln. -Tues. Disc. Women-Wed. Part. -Thurs. Disc. -Thurs. Bk. Study-Friday Lennox</p>	<p>Laguna Beach:- Tues. Women Disc. -Wed. Speaker Laguna Niguel:- Fri. Disc. La Habra:- Sun. Step Study Newport Beach:- Thurs. Spkr. Mission Viejo:- Wed. Women Disc. Orange:- Fri. Hosp. Spkr. -(Club) Tues. Step Study Placentia:- Mon. Part. San Juan Capistrano:- Thurs. Mens Stag Santa Ana:- (Club) Mon. Step Study Sunset Beach:- Fri. Step Study-Sat. Disc. Tustin:- Sun. AM Disc. Wandering Groups:- Friday-Saturday Participation Yorba Linda:- Mon. 12&12-Wed. Disc. H. & I.:- 2nd Sunday</p>
--	---

ORANGE COUNTY CENTRAL OFFICE STATISTICAL REPORT

CENTRAL OFFICE	NOVEMBER	YEAR TO DATE
REQUESTS FOR SPEAKERS	12	96
INFORMATION ON AL-ANON	82	745
LITERATURE INFORMATION	29	264
PUBLIC INFORMATION	866	8336
REQUESTS FOR MEETINGS, ETC.	902	8292
A.A. MEMBERS CALLING C.O.	461	3357
INQUIRY ABOUT SELF	191	1432
12 STEP CALL: MALES	84	756
12 STEP CALLS: FEMALES	86	704
VISITORS TO CENTRAL OFFICE	357	3899

TELEPHONE ANSWERING SERVICE (T.A.B.)

PUBLIC INFORMATION	310	1453
AL-ANON CALLS INFORMATION	210	883
REQUESTS FOR MEETINGS, ETC.	804	6571
CROSS CONNECT: MALE	93	734
CROSS CONNECT: FEMALE	34	485
TOTAL CALLS TO T.A.B. & C.O.	4164	34,108
TOTAL CONTACTS	4521	38,007

INTERGROUP HILIGHTS

Lew W., New Chairman of Intergroup, introduced the newly elected Board members and the positions they will hold as follows:

Ray B. (Garden Grove) Vice-Chairman
 George D. (Buena Park) Treasurer
 John L. (Santa Ana) Secretary
 Patti P. (Westminster) Special Events
 Helen S. (H.B.) Central Office
 Bill C. (San Juan Cap.) Group Relations
 Russ P. (Newport Beach) Lifeline
 Milt S. H & I.
 Sheryl K. Public Relations

The most important business was the consideration of removing the Al-Anon Directory from the AA Directory as the space is needed for new AA groups. It was decided to take it back to the groups for their decision.

For information about the new groups unlisted as yet turn to page 5 for this information.

Milt S., H&I Director announced that the Institutional meeting has a time change. Information meeting: 5:30 PM to 6PM. Regular meeting: 6PM to 7:30PM.

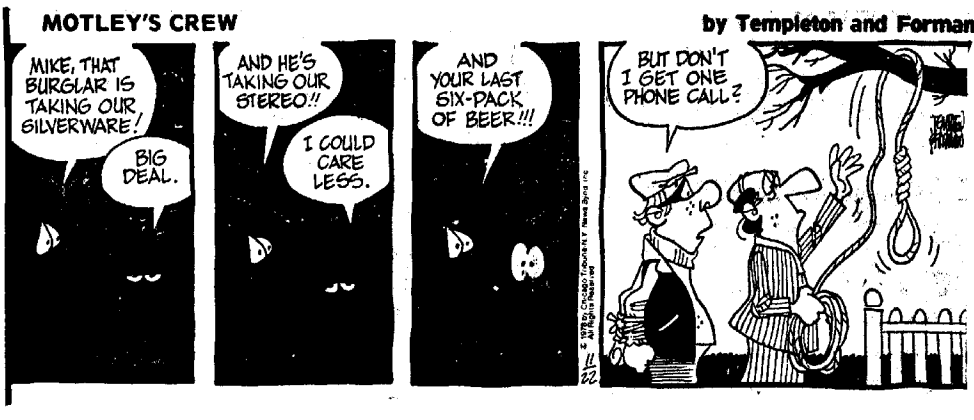
PUBLIC RELATIONS . . .

The speaker list for Non-AA meetings is in need of revision. My goal is to update inform, and form a nucleus of people who are willing to serve on the Public Information Committee.

For those who are interested in helping there will be a meeting here at Central Office, Monday, Jan. 7th at 7:30 PM. These people will be in contact with our schools, clubs, organizations, hospitals, etc. and we would like to put our best foot forward in carrying the message to the alcoholic who still suffers.

MOVIE "INSIDE A.A." WILL BE SHOWN

The movie, "Inside A.A.", G.S.O. sponsored, will be shown, Tuesday, Jan. 8th, at Central Office after the regular Intergroup Meeting. Your comments after its showing will be appreciated. After all it is about us . . . Sheryl K., Public Relations.



JANUARY 1980 MEETING DIRECTORY



A.A.

CENTRAL OFFICE

2712 S. GRAND AVENUE
SANTA ANA, CAL. 92705

TELEPHONE

(714) 556-4555

496-8407

FROM

SAN CLEMENTE - DANA POINT
LAGUNA BEACH
CAPISTRANO VALLEY AREAS

HOURS:

WEEKDAYS 8AM - 9PM
SATURDAYS 9AM - 4:30PM
SUNDAYS & HOLIDAYS 10AM - 4:30PM

ANSWERING SERVICE
ALL OTHER HOURS

PUBLISHED BY

**ORANGE COUNTY
INTERGROUP
ASSOCIATION
OF
ALCOHOLICS
ANONYMOUS**

MEETINGS ARE OPEN
AND BEGIN AT 8:30 P.M.
UNLESS NOTED.

(C) ALCOHOLICS ONLY
* DAYTIME MEETINGS

A.A. DIRECTORY SUNDAY

ANAHEIM

- Disc., (C), 7PM, 3154 E. La Palma, suite # F.
- *-Spkr., 11AM, 202 W. Broadway, Club.
- Beginner's Part., 202 W. Broadway.
- **-(C) Disc., 5:30 PM, 202 W. Broadway.
- *-Hispano, 11AM, 202 W. Broadway.
- *-Part. (C), 1:30PM, 202 W. Broadway.

BUENA PARK

- Spkr., 8150 Knott Ave., Teen Center.

CATALINA ISLAND

- *-11:30AM, St. Catherine's Church.

COSTA MESA

- *-High Noon Part, 2040 Placentia, Club.
- Spkr., Oddfellow's, 2476 Newport, 7:30PM.
- Disc., 7:30PM, 2040 Placentia, Club.
- *-Disc., 7AM, 2040 Placentia Ave.

FOUNTAIN VALLEY

- Spkr., Comm. Center, 10200 Slater, 8PM.

FULLERTON

- (C) Disc., 8PM, 204 E. Amerige St.
- *-Spkr., 10:30AM, 705 N. Harbor, Club.
- (C), Disc., 8PM, 705 N. Harbor, Club.
- *-Part., 2:30PM, 705 N. Harbor Blvd.

GARDEN GROVE

- *-12 Noon, Spkr., 9636 Garden Grove Blvd.
- Disc., 7:30PM, Main & Stanford, Church.
- *-(C), Disc., 5:30PM, 9636 Garden Grove.
- 12&12 Study, 7:30PM, 9636 Garden Gr.

IRVINE

- (C), Disc., 7:30PM, UCI Humanities Bldg.

LAGUNA BEACH

- *-Disc., 2PM, 1945 Broadway, Club.
- Disc., 1945 Broadway, Club.

LAGUNA NIGUEL

- *-Spkr., 8PM, Comm. Park, Crown Valley Pkwy.

LA HABRA

- Study, 8PM, 631 N. Euclid, Church

NEWPORT BEACH

- *-Disc., 11:30AM, 414 E. 32nd St., Club.
- (C) Disc., 7:30PM, 414 E. 32nd St.
- Speaker, 7:30PM, 1300 Bristol St. N.

ORANGE

- Spkr., 8PM, 401 S. Tustin, Hospital.
- *-Disc., 11 A.M., 2191 Orange-Olive Rd.
- Disc., 7:30PM, 2191 Orange-Olive Rd.
- *-Part., 6PM, Sch., Hewes & Spring.

SANTA ANA

- *-Disc., 11AM, 2112 N. Main St., Club.
- Open Disc., 7:30PM, 2112 N. Main St.
- Hispano, 7:30PM, 1244 S. Bristol.
- *-Hispano, Noon, 1321 S. Main St.
- Disc., 7:30PM, 1321 S. Main St.

SAN CLEMENTE

- *-Disc., 10:30AM, 324 Calle de Los Molinos.
- *-Disc., 4:30PM, 324 Calle de Los Molinos.
- Book Study, 324 Calle de Los Molinos.

SEAL BEACH

- *-10AM, on beach between 12th & 13th St.

STANTON

- *-Spkr., 1PM, 10936 Dale Ave.
- Disc., 8PM, 10881 Dale Ave.

SUNSET BEACH

- *-10AM, Warner & Coast Highway.

TUSTIN

- Spkr., 7:30PM, Civic C., Main & Centennia
- *-Breakfast, 10:30AM, 130 West Main St.
- *-Part./SPKR./Q&A, 9:02AM, W. Clubhouse
Devonshire at Sycamore, off Red Hill.

ANAHEIM MONDAY

- (C), Stag, 202 W. Broadway, Club.
- (C), Women Disc., 202 W. Broadway.
- Book Study, Men, 8PM, 202 W. Broadway.

MONDAY CONTINUED...

- *-12 Noon, Part., 202 W. Broadway.

BALBOA ISLAND

- Step Study, 115 Agate.

BREA

- Disc., 8PM, 875 N. Brea Blvd.

CORONA DEL MAR

- (C) Women, 8PM, 611 Heliotrope, Ch.

COSTA MESA

- *-Disc., Noon, 2040 Placentia, Club.
- (C), Women, 8PM, 2040 Placentia.
- (C), Stag, 8PM, 2015 Charle St.
- Beginners, 2040 Placentia, Club.
- Disc., 8PM, 2043 Orange Ave., (cor. Bay)
- *-Disc., 6PM, 2040 Placentia.
- *-Disc., 7AM, 2040 Placentia.
- *-Disc., 10:30AM, 2040 Placentia.

CYPRESS

- (C), Part., 6441 Lincoln, Church.

EL TORO

- *-Stp. Study, 11:30AM, M.C.A.S. Ch. Annex

FULLERTON

- Spkr., Hosp., 101 E. Valencia Mesa.

- *-Disc., 11:30AM, 705 N. Harbor.

- Book Study, 705 N. Harbor.

- Disc., 705 N. Harbor, 6:30PM.

- *-(C), Women, 1PM, 705 N. Harbor Blvd.

GARDEN GROVE

- (C), Women, 8PM, 9596 Garden Gr. Rm. 210.

- *-Disc., 12476 Main, 12:30PM, #15

- *-Disc., 7:30AM, 9636 Garden Grove.

- Eastgate Part., 8100 Garden Grove, #5.

- Disc., Stag, 8PM, 9636 Garden Grove.

- Spkr., Cor. Gilbert & Trask Aves.

- Disc., 8PM, 8501 Acacia St.

- Wmn., 8PM, 9636 Garden Grove Blvd.

- Disc., 8PM, 10111 Larson St.

HUNTINGTON BEACH

- 12&12 Study, 8PM, 6662 Heil St.

- Big Bk Study, 8PM, 18631 Chapel Lane

- Yng. People, City Hall, 2000 Main St.

- (C) Wmn. Disc., 8PM, 8292 Indianapolis.

IRVINE

- Study, 8PM, Irvine Cnrt. Dr. & Yale, Ch.

- 8PM, University & Culver, Church.

LAGUNA BEACH

- (C), Stag, 1945 Broadway, Club.

- *-Big Bk Study, 12:30PM, 1945 Broadway.

- (C), Women, Disc., 8PM, 363 Gleneyre, Lib.

- (C), Disc., Hosp., 31872 Coast Hwy.

LAGUNA HILLS

- Study, 8PM, Church, El Toro Offramp.

LA HABRA

- *-(C) Women, Disc., 631 N. Euclid, 10:30AM

LA MIRADA

- Disc., 14407 E. Rosecranz Ave., Church.

MISSION VIEJO

- (C), Women, 7:30PM, 24772 Chrisanta.

NEWPORT BEACH

- *-Women, 10:30AM, 414 E. 32nd St., Club.

- Disc., (C), 414 E. 32nd St., Club.

- Disc., Baywd. Rec. Rm. 1 Baywood Dr. 8PM.

ORANGE

- Spkr., 2191 Orange-Olive Rd., Club.

- *-Disc., 12 Noon, 2191 Orange-Olive Rd.

- (C), Wmn. Grapevine Disc. 7:3-PM, 710

S. CAMBRIDGE

- Participation, 1314 Angelina, Church.

SANTA ANA

- *-(C), Wmn. Disc., 1PM, 910 N. French St.

- Hispano, 8PM, 1244 S. Bristol.

- *-12 Noon Study, 2112 N. Main, Club.

- Speaker, 2112 N. Main St., Club.

- Mens Stag, 8PM, Elk's Lodge, 1st & Lyon St.

- Hispano Disc., 8PM, 1321 S. Main St.

SAN CLEMENTE

- Disc., Ch., 202 Avenida Aragon.

- *-(C), Women Part., 12:30 Noon, 324

- Calle de Los Molinos.

A.A. DIRECTORY

MONDAY CONTINUED...

-Disc., 324 Calle de Los Molinos.

STANTON

-Disc., 10936 Dale Ave., 8PM.

TUSTIN

-Mens Stag, (C), Part., 8PM, Main & C Sts. Ch

WHITTIER

-(C) Women, 15215 Janine.

WESTMINSTER

-(C), Women, Disc., 7382 Garden Grove.

YORBA LINDA

-(C), Study, 8PM, Ohio & Yorba Linda, Rm. 5

TUESDAY

ANAHEIM

-Part., Hosp. 1830 W. Romneya Dr. 8PM

*-(C) Wmn. Beg. 1:30PM, 703 N. Lemon.

-Speaker, Q&A, 202 W. Broadway.

-Part. Church, Magnolia & Orange Aves.

*1:30AM, 202 W. Broadway.

BREA

-12&12 Study, 8PM, 300 E. Imperial.

BUENA PARK

-(C) Study, 8PM, Rec. Bldg., Rm. D, 8150 Knott.

CATALINA ISLAND

-Study, 8PM, St. Catherine Church.

CORONA DEL MAR

*-Disc., 12 Noon, 611 Heliotrope, Church.

COSTA MESA

*-Q&A, 6PM, 2040 Placentia

-Disc., 7AM, 2040 Placentia.

-Part. 8PM, Grange Hall, Victoria & Thurin.

-Speaker, 2040 Placentia.

*-Disc., 12-1PM, Lib. Arts Bldg., #6, College

-(C) Mens Disc., 8PM, 1865 Anaheim St.

*-Big Bk. Step Study, Noon, 2040 Placentia.

DANA POINT

-Part., Carpenter's Hall, 24692 Del Prado.

FULLERTON

-Part., Church, 1231 E. Chapman

*-Disc., 11:30AM, 705 N. Harbor Blvd.

-Part., 8PM, 137 East Glenwood.

-Disc., 705 N. Harbor Blvd.

GARDEN GROVE

-Part., 8PM, 9636 Garden Grove Blvd.

*-Disc., 12:30PM, 9636 Garden Grove Blvd.

-Part., 7:30PM, 8100 Garden Grove, #5.

*-Disc., 7:30AM, 9636 Garden Grove Blvd.

-Part., 8PM, 12141 Lewis, Bay #6.

HUNTINGTON BEACH

-Disc., 8PM, 1836T Chapel Ln. at Ellis.

*-(C), Women, 1PM, 7402 Edinger, Manny's.

-Disc., 8PM, Church, 9812 Hamilton.

-(C), Stag, Study/Part., 19502 Surf Dale Ln.

*-(C), Women, 1PM, Q&A, 18631 Chapel Ln.

-(C), Women, Study, 8186 Constantine, 8PM.

IRVINE

-(C), Mens Stag, University & Culver, 8PM

-(C), Women, University & Culver, 8PM.

-(C), Good Guys, Stag, University & Cul. 8PM.

LAGUNA BEACH

*-Disc., 12:30PM, 1945 Broadway, Club.

-(C), Step Study, 1945 Broadway, Club.

*-(C), Women, 12:30PM, 428 Park Ave.

-11th Step Study, 428 Park Ave., 8PM.

LA MIRADA

-Disc., 15144 Leffingwell Ave.

LAGUNA NIGUEL

-(C), Book Study, 30121 Niguel Rd.

-Stp. Study, Comm. Park, Crown Valley Pkwy.

LOS ALAMITOS

-Disc., 8PM, Church, (1 Block west of

Katella & Los Alamitos)

NEWPORT BEACH

-Spkr., Church, 3209 Via Lido Soud.

-(C), Stag Disc., 1714 W. Balboa Blvd.

NEWPORT BEACH

-(C), Women Disc., 414 E. 32nd St.

*-Disc., 5:30PM, 414 E. 32nd St.

-Disc., 8PM, 1300 Bristol St. N.

ORANGE

-(C), Disc., Church, 1130 Walnut.

-Study, 2191 Orange-Olive Rd.

*-Disc., 12noon, 2191 Orange-Olive Rd.

*-Open Wmn., Study, 777S. Main. #116. noon.

SAN CLEMENTE

-Part., 324 Calle de Los Molinos.

-(C), 12:30 Noon, 324 Calle de Los Molinos

*-Disc., 6 PM, 324 Calle de Los Molinos.

SANTA ANA

-Disc., 2112 N. Main St., Club.

*-Disc., 12 Noon, 2112 N. Main St.

-Hispano, 8PM, 1244 S. Bristol

-Hispano, 8PM, 1321 S. Main, Part.

-Part., 9842 W. 13th St.

STANTON

-Spkr., 10936 Dale Ave.

TUSTIN

-(C), Disc., 8PM, Church, 1221 Wass.

-(C), Steps 1-4, 8PM, 1201 Irvine, Church.

*-Disc., 11:30AM, MCAS (H), Chapel.

WESTMINSTER

-Disc., 8PM, 8152 McFadden

-Open Disc. 8PM, 7232 20th St

WEDNESDAY

ANAHEIM

-Hispano & English, 202 W. Broadway

*-(C), Women, 1PM, 202 W. Broadway.

-Speaker, 202 W. Broadway.

BUENA PARK

-Open Part., 6711 Beach Blvd.

CORONA DEL MAR

-Disc., 233 Milford Dr.

COSTA MESA

-Question & Answer, 2040 Placentia.

-(C) Stag Study, 8PM, 2015 Charle.

*-Women, 3PM, 2040 Placentia.

*-Step Study, 6PM, 2040 Placentia.

*-Disc., 7AM, 2040 Placentia.

CYPRESS

-(C), Study, 8PM, Tanglewd Club, 4862 Larwin.

EL TORO

*-11:30AM, -1PM, Disc., Ch. Annex, M.C.A. S.

FOUNTAIN VALLEY

-Disc., 8PM, Church, 10280 Slater Ave.

FULLERTON

-Speaker, 705 N. Harbor Blvd, Club.

-Hispano, 8PM, 1231 E. Chapman, Church.

*-Disc., 11:30AM, 705 N. Harbor Blvd.

GARDEN GROVE

-(C), Stag, 1309T Galway, Church.

-Yng. People, 9636 Garden Grove Blvd.

-Big Bk. Study, 8 PM, 9636 Garden Gr.

*-(C), Women, 12 Noon, 9636 Garden Grove.

-(C), Serenity, 8PM, 9621 Bixby, Church.

*-Trad. Workshop, 5:30PM, 9636 Garden Gr.

-Beginners, Part., Cor. Gilbert & Trask.

*-Disc., 7:30AM, 9636 Garden Grove Blvd

HUNTINGTON BEACH

-Part., Oddfellows Hall, 226 Main St.

*-(C), Womens Study, 1PM, 9812 Hamilton.

-Mens Wandering, call 556-4555 for info.

IRVINE

*-Disc., Noon, 3883 Parkview, Clubhouse.

-Beginners, 8PM, University & Culver, Ch.

LAGUNA BEACH

-Spkr., Woman's Club, St. Anne & Gleneyre.

*-Disc., 12:30PM, 1945 Broadway, Club.

-Q&A/Spkr., 363 Gleneyre, Library.

-Newcomers, 7:15PM, 1945 Broadway.

-Spkr. 8:30PM, 1945 Broadway.

LA HABRA

-(C), Men's Stag, Part., 951 Idaho.

LA MIRADA

-(C), Women, 14407 E. Rosecranz, Ch.

LOS ALAMITOS

-(C), Study, 7:30PM, Bldg. #4, Rm. #201,

Air Station.

MISSION VIEJO

-Disc., Ch., Oso & Marguerita Sts.

*-(C), Women, 9:30AM, Oso & Marguerita

NEWPORT BEACH

-Disc., 880 Irvine, N. Conf. Rm., Oakwood.

-(C), Big Bk. Study, 414 E. 32nd St.

*-Study, 12:30 Noon, 414 E. 32nd St.

*-Disc., 5:30PM, 414 E. 32nd St.

-Part., Savings & Loan, #4 Corporate Plaza.

ORANGE

*-Disc., 12 Noon, 2191 Orange-Olive Rd.

-Part., 2191 Orange-Olive Rd.

-Disc., 8PM, 1215 W. La Veta, 3rd Fl. Home

-12&12 Study, 8PM, 3807 Silverleaf.

SAN CLEMENTE

-Spkr., Q&A, 324 Calle De Los Molinos.

*-(C), 12:30 Noon, 324 Calle De Los Molinos:

SANTA ANA

-(C), Women, 8PM, 910 N. French St.

-Disc., 2112 N. Main St.

-Spkr., Hispano, 8PM, 1244 S. Bristol.

-Hispano, Disc., 8PM, 1321 S. Main.

*-Disc., 12 Noon, 2112 N. Main St.

-Disc., 8PM, 9842 13th St.

STANTON

-Civic Center, 7800 Katella Ave., 8PM.

-Disc., 8PM, 10881 Dale St.

TUSTIN

-(C) Women, 1201 Irvine, 8PM, Ch.

YORBA LINDA

-Disc., 8PM, S. Ohio & Yorba Linda, Rm. 5.

THURSDAY

ANAHEIM

-(C), Women, 7:30PM, 703 N. Lemon.

-Spkr., 202 W. Broadway, Club.

*-Book Study, 12 Noon, 202 W. Broadway

-Men's 12&12 Study, 8PM, 107 W. Elm.

-Wandering Group, call 539-7040 for info.

BREA

-Disc., 300 E. Imperial, Church.

CATALINA ISLAND

-Disc., 8PM, St. Catherine Church.

COSTA MESA

-Disc., 2040 Placentia Ave., Club.

-Disc., 8PM, Hosp. Harbor & Fair, Rm. 1099.

*-Disc., 7AM, 2040 Placentia.

-Disc., 7PM. 3124 Colleege, Clubhouse.

-Disc., 11PM, 2040 Placentia.

-(C) Disc., 7:30PM, Wmn. Orange & Bay.

*-6PM, Traditions, 2040 Placentia.

DANA POINT

-(C), Stag, Men, 33926 Calle Primavera.

FULLERTON

-(C) Stag, 736 West Amerige.

-Disc., (C), Women, 1231 E. Chapman.

*-Study, 11:30AM, 705 N. Harbor Blvd.

-Step Study, 705 N. Harbor Blvd.

-Yng. People, 501 N. Commonwealth, #9.

*-(C), Women, 705 N. Harbor, 6:30 PM.

GARDEN GROVE

-Big Bk. Study, 7:30PM, 8501 Acacia, cor. Dr. 1a

-Beginners, 8100 Garden Grove #5.

-Part., 8PM, 12091 Bayport, Oakwood Apts.

-Friendship, Part., Main & Stanford, 8PM.

-Study, 12:30PM, 9636 Garden Grove Blvd.

-Spkr., 9636 Garden Grove Blvd.

*-(C) Wmn. 1PM, 9596 Garden Gr. Rm. 210.

-Disc., 6PM, 9636 Garden Grove, Rm. #25.

*-Disc., 7:30AM, 9636 Garden Grove Blvd.

HUNTINGTON BEACH

- Bk.Study, 8PM, 7402 Edinger, Manny's.
- *-Disc., 12Noon, Edinger & Golden West.
- Spkr./Part. City Hall, 2000 Main St.

IRVINE

- Bg. Bk. Stag, Culver & University.
- *-Bg. Bk. Study, 6PM, (C), Fluor Corp. Bldg. off Michelson.

LAGUNA BEACH

- Beginners, 1945 Broadway, Club.
- *-(C), 12:30PM, Women, 428 Park Ave.
- *-(C), Women, 6PM, 1945 Broadway, Club.

NEWPORT BEACH

- *-Beginners, 12noon, 414 E. 32nd St.
- Newcomers, 7-8PM, 515 W. Balboa Blvd.
- Spkr., Ebell Club, 515 W. Balboa Blvd.
- Spkr., 8PM, 1300 Bristol St. N.
- *-Disc., 12Noon, 1300 Bristol St. N.

ORANGE

- Beginners, 2191 Orange-Olive Rd.
- *-Disc., 12Noon, 2191 Orange-Olive Rd.
- Part., Hospital, 401 S. Tustin, 8PM.

SAN CLEMENTE

- (C), Wmn., Study, 324 Calle de Los Molinos.
- *-(C), 12:30Noon, 324 Calle de Los Molinos.
- *-Disc., 6PM, 324 Calle de Los Molinos.

SAN JUAN CAPISTRANO

- Stag, 32202 Del Obispo, Church.
- *-1PM, 32141 Alipaz, #B.

SANTA ANA

- *-Disc., 12Noon, 2112 N. Main St.
- Beginners, 2112 N. Main St.
- Hispano(C) Disc., 8PM, 1244 S. Bristol.
- Disc., 5306 W. McFadden, 8PM, Church.
- Hispano, Part., 1321 S. Main St., 8PM.

SEAL BEACH

- 8PM, St. Anne Ch., 10th & Coast Hwy.

STANTON

- Participation, 10936 Dale Ave., 8PM.

TUSTIN

- (C), 12&12 Study, 8PM, 1201 Irvine, Ch.

WESTMINSTER

- Disc., 8PM, 8912 Hazard & Magnolia, Ch.

SOUTH WHITTIER

- Speaker, 11030 Carmenita Road.

FRIDAY

ANAHEIM

- Mens Stag, Upstairs, 202 W. Broadway.
- *-(C) Wmn., Stp. Study, 1PM, 202 W. Broadway.

CORONA DEL MAR

- *-Disc., Noon, 202 W. Broadway.
- Hispano Disc., 202 W. Broadway,
- Spkr., Hosp. Aud., 1111 La Palma.
- Part., 202 W. Broadway.

COSTA MESA

- (C), Stag, 310 W. Broadway, Basement.

LAGUNA BEACH

- Disc., 11PM, 202 W. Broadway, Club.

NEWPORT BEACH

- 12&12 Study, 202 W. Broadway, Club.
- Spkr., Hosp., 1830 W. Romneya Drive.

BUENA PARK

- 8:30PM, 6711 Beach Blvd.
- 10:30PM, 6711 Beach Blvd.

CORONA DEL MAR

- (C), Disc., 611 Heliotrope, Church.

COSTA MESA

- *-Disc., Grapevine, 6PM, 2040 Placentia.

LAGUNA BEACH

- *-Disc., 7AM, 2040 Placentia.
- Spkr., 2040 Placentia, Club.

NEWPORT BEACH

- *-Disc., 12 Noon, 2040 Placentia.
- Study 787 Hudson St.
- Book Study, 8PM, 1865 Anaheim St.
- Candlelight Part. 11PM, 2040 Placentia.
- Disc., 2987 Mesa Verde Dr.

CYPRESS

- Speaker/Disc., 5900 Ball Rd., & P.M.

FULLERTON

- (C), Study, 1231 E. Chapman, Church.

LAGUNA BEACH

- *-Part., 11:30AM, 705 N. Harbor.

LAGUNA BEACH

- Topic Disc., 705 N. Harbor.
- Hispano, 8PM, 244 E. Valencia.

GARDEN GROVE

- *-(C) Women, 10:30AM, 12476 Main St. #15.

LAGUNA BEACH

- Part., 9636 Garden Grove Blvd.
- Part., 11PM, 9636 Garden Grove Blvd.

LAGUNA BEACH

- (C) Wmn., 8PM, 9596 Garden Grove, Rm. 210
- Part., 8PM, 13472 Gilbert.

LAGUNA BEACH

- *-Disc., 12Noon, 9636 Garden Grove Blvd.
- *-Disc., 6PM, 9636 Garden Grove Blvd.

HUNTINGTON BEACH

- College View Sch., 6582 Lennox.
- Rebos. Part., 9812 Hamilton, Church.
- Part., City Hall, 2000 Main, Cafeteria.
- Disc., 8PM, 20400 Magnolia.

IRVINE

- Disc., 8PM, University & Culver, Ch.
- (C), Part., 8PM, University & Culver, Ch.

LAGUNA BEACH

- *-Q & A, 12:30PM, 1945 Broadway, Club.
- Under 40, St. Annes & Gleneyre, Library.
- Disc., Hosp. 37872 Coast Highway.
- *-Q & A, 6PM, 1945 Broadway, Club.
- Disc., 8PM, Canyon Club, 1945 Broadway.

LAGUNA NIGUEL

- Disc., Comm. Park Crwn, Valley Pkwy.
- Disc., Capistrano H. Sch. 20381 Via Escolar

LA HABRA

- Speaker, 631 N. Euclid.

MIDWAY CITY

- 7:30PM, Hazard & Newland, Hut.

NEWPORT BEACH

- (C), Men Disc., 414 E. 32nd St., Club.
- (C) Disc., 414 E. 32nd St., Club.

ORANGE

- Disc., 2191 Orange-Olive Rd.
- (C) Wmn., 10:30AM, Study, 3126 Gainesboro.

LAGUNA BEACH

- *-Part., 12noon, 2191 Orange-Olive Rd.
- Disc., 11PM, 2191 Orange-Olive Rd.
- Spkr., Childrens Hosp. Aud. 1109 W. LaVeta.

SAN CLEMENTE

- Spkr., Church, 202 Avenida Aragon.
- *-(C), 12:30Noon, Disc. 324 Calle de Los Molinos

SAN JUAN CAPISTRANO

- Study, 32202 Del Obispo, Church.

STANTON

- (C), 12 Steps Study, 8PM, 10936 Dale.

SANTA ANA

- Part., (C), 2112 N. Main St., Alano C
- Hispano, Part., 8PM, 1244 S. Bristol.
- Spkr., 2112 N. Main St.
- Hispano Disc., 1321 S. Main St., 8PM.
- *-Disc., Noon, 2112 N. Main St.
- 5th Step Disc., 11PM, (C), 2112 N. Main.

SUNSET BEACH

- (C), Step Study, 8PM, Bayview & Broadway

TUSTIN

- Newcomers, 7:15-8:25PM, Part. 8:30PM, Church, 1221 Wass.

WANDERING GROUP

- Call 556-4555 for location.

SATURDAY

ANAHEIM

- Yng. People, 8PM, 2Hr. Spkr./Part. 423 N
- Anaheim Blvd. (Old Elk's Club).
- (C), Part, 202 W. Broadway, Club.
- Disc., 11PM, 202 W. Broadway, Club.
- Spkr., 202 W. Broadway, Club.

CATALINA ISLAND

- Part., St. Catherine Church.

COSTA MESA

- *-Spkr./Part. 1:30PM, 2040 Placentia
- Mens Stag, (C), 7:30PM, 2040 Placentia.
- Spkr. 8PM, 2015 Charle St.
- *-Stag, 9:30AM, 2015 Charle St.
- *-Disc., 7AM, 2040 Placentia.
- *-Ba. Bk. Study, 6PM, 2040 Placentia.

FULLERTON

- *-11:30AM, Disc., 705 N. Harbor Blvd.
- 11PM, Disc., 705 N. Harbor Blvd.
- Spkr., Oddfellow's Hall, Lemon & Amerige
- *-Beginners, 2PM, 137 East Glenwood.
- Disc., 705 N. Harbor.

GARDEN GROVE

- Speaker, 9636 Garden Grove Blvd.
- *-Disc., 12:30PM, 9636 Garden Grove.
- Part., 7PM, 12141 Lewis, Bay #6.
- *-Beg. Disc., 1PM, 13472 Gilbert Ave.

IRVINE

- Spkr., Church, University & Culver.

LAGUNA BEACH

- Visiting Spkr. 8PM, 1945 Broadway.
- Spkr., Hosp. 31872 Coast Hwy., 8PM.
- *-Lunch aBunch, 12:30PM, 1945 Broadway.

LA MIRADA

- 8PM, Part., 15144 E. Leffingwell.

MIDWAY CITY

- Part., 8PM, Hazard & Newland, Hut.

NEWPORT BEACH

- Spkr., Hosp. Conf. Center, 301 Newport.
- Part. 11AM, 414 E. 32nd St.
- Disc., 414 E. 32nd St.

ORANGE

- Part., 2191 Orange-Olive Rd.
- Disc., 11PM, 2191 Orange-Olive Rd.
- *-Disc., 2PM, 2191 Orange-Olive Rd.

SAN CLEMENTE

- Disc., 324 Calle de Los Molinos.
- *-Disc., 12:30PM, 324 Calle de Los Molinos.
- *-Disc., 4:30 PM, 324 Calle de Los Molinos.

SANTA ANA

- Disc., 2112 N. Main St.
- Spkr., 2PM, 910 N. French St.
- Hispano, Part., 8PM, 1244 S. Bristol.
- Hispano, Bk. Study, 1321 S. Main St.
- Part., (C), 10PM-12:30, 1244 S. Bristol.

STANTON

- Part., 1321 S. Main St.
- Spkr., 8PM, Hosp., 1001 N. Tustin

SUNSET BEACH

- (C), Bg. Bk. Study, 2:30PM, 10936 Dale Ave.

TUSTIN

- 7:00P.M. Bayview & Broadway
- 9:00P.M. Bayview & Broadway

WESTMINSTER

- Visiting Spkr., 14662 Newport, Hosp. 8PM

WANDERING GROUP

- Call 556-4555 for location.

WESTMINSTER

- Disc., 8PM, 7382 Garden Grove Blvd.
- *-Stp. Study, 3:30 P.M., 7232 20th St.

MONTHLY MEETINGS

ORANGE COUNTY INTERGROUP ASSOCIATION

- 2ND TUES. JAN. 9TH, Central Office
- 2712 S. Grand Ave., Santa Ana, 8PM.

INTERGROUP SERVICE FORUM

- No meeting

ORANGE COUNTY H&I MEETING...

- 2ND SUN. Alano Club, 9636 Garden
- Grove Blvd. 6PM-7:30PM...
- Information meeting, 5:30 to 6PM.
- La Habra Breakfast Group-3RD Sunday-
- 401 E. Imperial Hwy., La Habra, 9:30AM.
- Dana Point Marina-Breakfast Group- 1st
- Sunday, Restaurant, 9AM, 25052 Del Prado.

GROUP REPRESENTATIVES MEETINGS

- Dist. #6, 1st Tues. 7:30PM, Ch. Parish Hall,
- Magnolia & Indianapolis, H.B. 536-6468.
- Dist. #5 & #7, 1st Thurs. 8PM, 17712 West-
- bury Dr. Call 731-0201 for information.

LAGUNA BEACH

- Dist. #10, 15, 16, 1st Wed. 8PM, St. Andrews
- Church, 1231 Chapman, Fullerton.

LAGUNA BEACH

- Dist. #12, 3rd Wed., 6:30PM, 24791 La
- Vida Dr., Laguna Niguel.
- Dist. #18, 2nd Thurs. 7:30PM, 2622 West
- Occidental, Santa Ana. Call 540-8054

AL-ANON ALATEEN DIRECTORY

INFORMATION CENTER

700 El Camino Real, Tustin, 92680

PHONE **838-0865**

Open Mon.-Fri. 9:30AM-4:30 PM.
Meetings are open and begin at 8:30PM unless noted. * Daytime.

Meetings listed below cooperate with but are not a part of nor affiliated with A.A.

ANAHEIM SUNDAY

Beginners, 202 W. Broadway, Club.

COSTA MESA

-7:30PM, 2040 Placentia Ave., Club.

IRVINE

-Disc., 7:30PM, UCI Humanities Bldg.
-Alateen, 7:30 PM, UCI Humanities Bldg.
-Preteen, 7:30PM, UCI Humanities Bldg.

MONDAY

ANAHEIM

*-Disc., Noon, Church, 311 W. South St.

CERRITOS

-7:30PM, 18422 Bloomfield Ave., Ch.

GARDEN GROVE

-Alateen, 9636 Garden Grove Blvd., 8PM
-8PM, Church, 1309 1/2 Galway.

HUNTINGTON BEACH

-Study, 8PM, 6662 Heil St.

LAGUNA BEACH

*-Daytime, noon, Church, 340 St. Annes Dr.
-8:30PM, Church, 428 Park Ave.

LA HABRA

*-11AM, 150 N. Palm Ave., Church.

MIDWAY CITY

*-11:30AM, 14752 Jackson St., Church.

ORANGE

-Church, 161 S. Orange St.

-Alateen, 7:30PM, 1215 La Veta at Pepper.

PLACENTIA

-Church, 1314 Angelina.

TUSTIN

-8PM, Church, 1201 Irvine.

IRVINE

-8PM, Study, Ch., University & Culver.

TUESDAY

ANAHEIM

*-12 Noon, 720 S. Magnolia, Church.

CORONA DEL MAR

-Comm. Church, 8PM, 611 Heliotrope.

COSTA MESA

-Disc., Alano Club, 2040 Placentia.

*-12 noon, 2040 Placentia, Club.

FOUNTAIN VALLEY

*-12:30PM, Comm. Cntr., 10200 Slater, RM. A.

FULLERTON

-Alanon, Alateen, 1231 Chapman, Church.

GARDEN GROVE

-(C), 8PM, 9636 Garden Grove Blvd.

HUNTINGTON BEACH

-Alateen, 8236 Ellis, 8PM, Church.

-8PM, Civic Center Cafeteria, 2000 Main.

ORANGE

-2535 N. Tustin, Savings & Loan Bldg.

SAN CLEMENTE

*-1PM, Church, 202 Avenida Aragon.

SANTA ANA

-Hispano, Spkr., 8PM, 1244 S. Bristol.

WEDNESDAY

ANAHEIM

*-Alateen, 6:30PM, 202 W. Broadway.

-Hispano, 202 W. Broadway, Club.

EL TORO & LAGUNA HILLS

*-Noon, 23601 Moulton Pkwy., Savings & Loan Bldg.

FULLERTON

*-12:30PM, Church, 114 N. Pomona.

GARDEN GROVE

*-12 Noon, Main & Stanford, Church.

HUNTINGTON BEACH

-Church, 8PM, 6662 Heil St.

MISSION VIEJO

(C) Womens Stag, Margarita & Osa, Ch.

NEWPORT BEACH

-Alateen, Hosp., 7PM, 1501 E. 16th.

ORANGE

-1915 N. Tustin, Savings Bldg.

*-11:30AM, Hospital Tower, 705 W. La Veta at Pepper, Medical Center.

SANTA ANA

-Alateen, 8PM, 1244 S. Bristol.

TUSTIN

-8PM, 225 W. Main, Speaker.

THURSDAY

ANAHEIM

-202 W. Broadway, Alana Club.

BUENA PARK

*-10AM, 8101 Stanton Ave., Bank.

COSTA MESA

*-11:30AM, 287 W. Wilson, Church.

CYPRESS

-8PM, 5900 Ball Road.

-Stag, 287 W. Wilson, Church.

FULLERTON

-Study, 705 N. Harbor Blvd.

GARDEN GROVE

-Women, 9636 Garden Grove Blvd.

HUNTINGTON BEACH

-8PM, School, 8251 Heil.

LAGUNA BEACH

**-Beginners, 12 Noon, 1945 Broadway.

LAGUNA NIGUEL

-Al-Anon/Alateen, 8PM, 30121 Niguel Rd.

LA HABRA

-8PM, 631 N. Euclid, Church.

ORANGE

*-12 Noon, 1915 N. Tustin, Savings Bldg.

-8PM, Hospital, 401 S. Tustin.

-Alateen, Hospital, 401 S. Tustin. 8PM.

SEAL BLACH

-St. Annes Hall, 10th & Coast Hwy. 8PM

TUSTIN

-Study, 8PM, 1201 Irvine, Church.

YORBA LINDA

-Ch. 19012 Yorba Linda Blvd.

FRIDAY

BUENA PARK

-6711 Beach Blvd.

COSTA MESA

-Disc., Alano Club, 2040 Placentia.

FULLERTON

*-10AM, 1521 W. Orangethorpe, Ch.

IRVINE

-Church, 8PM, Culver & University

LA HABRA

-Church, 150 N. Palm.

-Church, 8PM, 723 N. Bush

SANTA ANA

-Hispano, Study, 1244 S. Bristol.

-8PM, Ch., 723 N. Bush.

ORANGE

-10:30AM, 777 S. Main, Suite # 116, (Baby sitting available).

SAN CLEMENTE

-8:15PM, 324 Calle de Los Molinos.

TUSTIN

-Church, 1221 Wass.

SATURDAY

ANAHEIM

-(C), 7:30PM, 311 W. South St., Ch.

COSTA MESA

*-Alateen, 1:30PM, 2040 Placentia.

GARDEN GROVE

-9636 Garden Grove Blvd., Club.

-7PM, Church, 12141 Lewis.

LAGUNA BEACH

-8PM, Hosp. 31872 Coast Highway.

-8PM, Preteen, Hosp., 31872 Coast Hwy.

SANTA ANA

-Hispano, Disc., 8PM, 1244 S. Bristol.

*-Hispano, 2PM, 1321 S. Main St.

RELATED FACILITIES

Clubs listed below are cooperating with, but are not a part of nor affiliated with Alcoholics Anonymous.

CLUBS

ANAHEIM

202 W. Broadway

HOURS: Every Day

COSTA MESA

2040 Placentia

HOURS: Mon. thru Fri. 6AM - 11PM.

Sat. 6AM (open all night) thru Sun. 11PM.

FULLERTON

705 N. Harbor

HOURS: Every Day

GARDEN GROVE

9636 Garden Grove

HOURS: Every Day

LAGUNA BEACH

1945 Broadway

HOURS: Every Day

NEWPORT BEACH

414 E. 32nd.

HOURS: Every Day

ORANGE

2191 Orange-Olive

HOURS: Sun, thru Thurs 9AM - 11:30 PM

Fri. & Sat. 9AM - 1:00AM

SAN CLEMENTE

324 Calle De Los Molinos Phone 492-9226

HOURS: Before and after meetings.

SANTA ANA

2112 N. Main

HOURS: Every Day

SANTA ANA

1244 S. Bristol

HOURS: Weekdays

Sun. & Holidays

ALANA CLUB

Phone 535-9977

" 535-0900

6AM - 11PM

ALAÑO CLUB

Phone 631-9967

6AM - 11PM.

Sat. 6AM (open all night) thru Sun. 11PM.

ALANO CENTER

705 N. Harbor

Phone 738-9469

7AM - 11PM

ALANO CLUB

Phone 534-2244

7:30AM - 11PM

CANYON CLUB

Phone 497-1823

11AM - 11PM

NEWPORT CLUB

Phone 673-9899

10AM - 11:30PM

FRIENDSHIP CLUB

Phone 637-9860

9AM - 11:30 PM

ALANO CLUB

Phone 492-9226

Before and after meetings.

ALANO CLUB

Phone 558-9717

9AM - 11PM

HISPANO CLUB

Phone 754-9117

6:30PM - 11PM

9AM - 11PM



The film "Alcoholics Anonymous - An Inside view" has been shown over most of the Mid-Southern California Assembly Area and the comments we have heard are generally favorable. Many viewers were not always aware that the purpose of this film was not necessarily to carry the "message" directly to the newcomer or the potential member. Rather, it was designed to acquaint the many people who are professionally coming into contact with alcoholism and alcoholics, i.e., the doctors, judges, probation officials, ministers, teachers, non-alcoholic counsellors and others. The film shows what the program does for the alcoholic once he has accepted it. It is also a graphic portrayal of what we, as members of Alcoholics Anonymous, can and cannot do under the twelve traditions.

The film is not being generally shown to the audience for which it was made at this time. We in the fellowship are being given the opportunity to express our views after which changes may or may not be made. We are very happy to be able to see it in our area and it will be available for some time. If your group is interested in scheduling it you may contact Goldene in Riverside at 714-682-1019 and arrangements will be made for a showing.

Many General Service people in our area are involved in putting together the PACIFIC REGION AA SERVICE ASSEMBLY, which will convene February 29th and continue through March 2nd, 1980 at the Inn at the Park, Anaheim. This is the first time California has been the site of the PRAASA and encompasses the Assembly Areas of Washington, Oregon, Arizona, Nevada, Utah, Alaska, Hawaii and the five areas in California---Southern, Northern Interior, San Diego and Mid-Southern.

The Service Assembly is structured after the plan of the General Service Conference in N.Y., and on those topics of the coming 1980 Conference, the theme of which is "Participation- the Key to Recovery." We are preparing the questionnaire for general circulation to all groups in order to get a representative group conscience. We will be pleased to have your participation in filling out the questionnaire when it is at your group. (It will appear in your Lifeline).

This Christmas season is filled with alkathons, marathons and a host of AA and AA related activities. We hope everyone in the fellowship avails themselves of these many occasions, especially the AA meetings throughout the area, and why not take a newcomer along with you? Participation is sharing and we all can gain when we take a newcomer along with us.

All of us at the Assembly, Clara, Lois, Dyanne, Bob and myself wish you a sober and happy Christmas and New Year and the very best gift of all---sobriety through 1980.....Denver C., Delegate

P. E. R. A. A. S. A. PACIFIC REGION ALCOHOLICS ANONYMOUS SERVICE ASSEMBLY

The Pacific Region Alcoholics Anonymous Service Assembly (P.R.A.A.S.A.), pronounced Per Rass Sa will be hosted by the General Service structure in our Area, February 29, Mar. 1-2, 1980 in Anaheim Calif. at the Inn at the Park Hotel.

This is a first for our Area. The Service Assembly is structured on the General Service Conference topics.

There will be members from the seven Western States, plus Alaska and Hawaii. There will be a \$5 donation, Registration. Come on AA Groups! Save \$5 for the PRAASA in February, give it to your Group Representative and get 'em over there!! YOU come too, no one will be turned away with or with out the \$5 registration. However costs at the hotel are extremely high, the coffee alone will run over 50¢ per cup. We learn in AA that we pay our own way...So-o-o-o if you can afford it, "pay it".

The last PRAASA was held in Hawaii, and there won't be another this close for at least a decade, so put it on your calendar. Let's give a big welcome to our AA friends from the other states.

Registration forms are available at your Central Office.... Jerry F.

.....Mid-Southern California Area Newsletter..... December-January 1979-1980

CHANGES

District #6 will meet the first Tuesday, 7:30PM, Church Parish Hall, Magnolia & Indianapolis, Huntington Beach. Call 536-6468.



